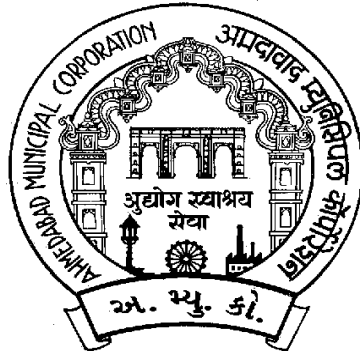


htRx xivRLVtbNI yfx - 2005 ykde RSI h vqoÍ tÍ I kktyfxeJ zem¾j tÍ h

btÂn<e(bæJJtI t)yÂDfth
yÂDÂI gb - 2005

yÂDÂI gbl fj b - 4 (F) nKα I e ÂJd<Jth
btÂn<e ytv<e vM<ft/btdæÂNft

ÂJd<Jth wI tb - RSI h - vqoÍ tÍ



ybæJtæ bntI dhvtÂj ft
RSI h-vqoÍ tÍ

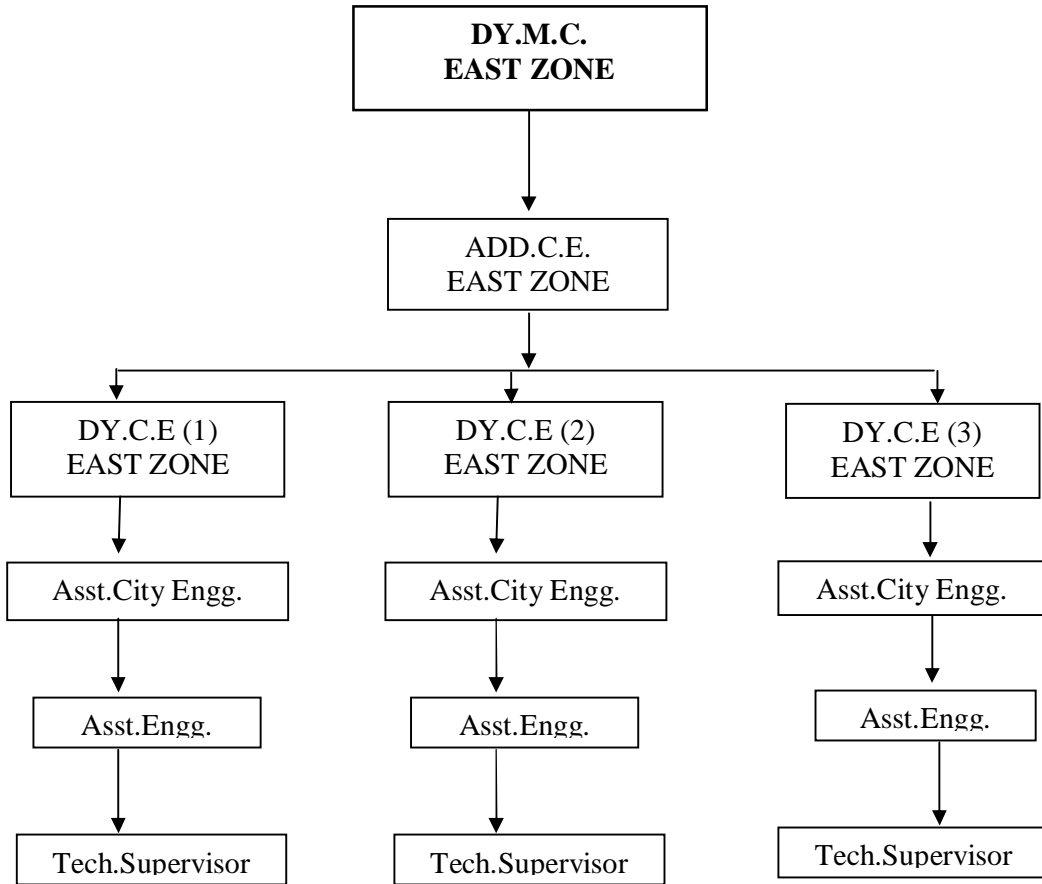
Jto2019-20

vfhK - 1

mbdXI l e ÂJd<tu
ÔgJM&t<Pt, ftgtayl uVhstu

ÔgJM&t<PtbtkzuBÇprl .frbNI h, yze.mexe ylSI egh, zumexe ylSI egh,
ytme.mexe ylSI egh, ytme.ylSI egh,xifl efj mwhJtRÍ h <&t l til
xifl efj mwhJtRÍ l tu mbtJN &tg Au zÿ ß, vtKe, htz <&t BÇprl .rcÔz'd
cl tJt yldil e ftbdehe <bs blxl Lml e ftbdehe fhJtbk ytJuAu <bs
zÿ ß yl uvtKel t fl fNI tuytvJtbk ytJuAu

AHMEDABAD MUNICIPAL CORPORATION EAST ZONE - ENGINEERING DEPARTMENT



(1) DEPUTY MUNICIPAL COMMISSIONER (ZONE)

Bgnl rmvj frbNI h[©]el e b^αj bsh^e y l mth zuBQ. frbNI h[©]eytl umck^<
Í tl btkl ead t yr^ftht/ Vh^òu^lpk<

fhJtbkylJuAu

(1) Itklifeg m-tt (ytlh -fJtrNI Äh<e c^t s Ft<t btx) :-

- zuBQ. frbNI h[©]e : Á. 1, hv, 000/-

- BQrl rmvj frbNI h[©]e : Á. 3, 00, 000/-

(2) EsI h Ft^ò:-

(2) Á. 1, hv, 000/- M[^]el e VtEj ytmemexe y^lSI egh[©]e îtht <igth fhe
me^e y^æ.mexe y^lSI egh[©]e bthV<uzubQ. frbNI h[©]el uBpf JtbkylJNu
bsh^e bégt ct> VtRj me^e zumexe y^lSI egh[©]e <hV y^lu ògt^le
ytmemexe y^lSI egh[©]e <hV btfj Jtl ehnl^u

(3) Á. 1, hv, 000/- Wvhtkl e ftE^vK cs^ll e VtEj t^uytmemexe y^lSI egh[©]e
îtht <igth fhel uy^æ.mexe y^lSI egh[©]e bthV<uzubQ. frbNI h[©]e ògth ct>
BQrl . frbSh[©]e l uBpf JtbkylJNu bsh^e bégt ct> VtRj me^e zumexe
y^lSI egh[©]e <hV y^lu ògt^le ytmemexe y^lSI egh[©]e <hV btfj Jtl ehnl^u

(4) EsI h Ft<t^òkytJ<e>rl f j t^lv^hgt>tl^lpvhrJÍ l y^l u^hòp j utl tu&tg
Au

(5) Í tl füttyuatj <t hu^lQ/ fwe j /yb.ve./yb.yj .yu^lft^lme j h[©]e îtht
Vt^αJtgj cs^ll t fbt^lpvhrJÍ l <&t h[©]fhJtl tu&tg Au

«fhK - 2

yÄDfthe<&t fbøthel e ytl em•titytuy l w/hstu

(1) ADDITIONAL CITY ENGINEER (ZONE)

1. He shall plan Overall improvement and development of water S.W.D,Roads and Drainge service of his zones,and shall keep in touch and co-ordination with Project Devision as well as Elecrical-Mechanical Section for timely implementation.He will also balance the proper water distrubution in his zonal areas and make suitable changes in network and valve controles,whereever and whenever necessary.
2. He shall cheke the complaint registers atleast once on a fortnight,ensure that the complaint are atteded regularly and promptly.
3. He will guide his staff for structural improvement of Muncipla building,public toilets,Sanitary Blocks etc.He will monitor his staff in well planned maintence and desilting of Strom water drains,Catchpits.Drainge lines,Manholes before and during Monsoon.He will also control and restrict the sewage water from entering the strome water drain in fair seasons.
4. He will schedule the rgular visit at source of water supply to his area.He will also pay regular visit to sewage disposal woris under him and will monitor the quality of effluent as well as the function of S.T.P.

5. Add.c.e will be responsible for planning of Budget for works under hom and at the same time he will have to keep up the progress of the works to meet with the Budget provision. Add.C.E's will monitor the preparation of tender dicuments ,specification of each of the items,their rates and the time shedule (time limit) for complition of work.

6. Add.C.E will keet an up to date record for the works carried outh from (1) Govt. or any other grant(2) Govt.or any other loan(3) Works undr M.P Budget (4) Works under M.L.A Budgetr (5) Works under Muncipal Councilors budget with him.

(2) DEPUTY CITY ENGINEER(ZONE)

1. Deputy City Engineer will see overall maintainace of Engineering services in his wards.He will keep the close watch on the zonal and tubewell station and drainge pumping station of his wards,as well as terminal sewage pumping stations and if any problem is found,he shall immediately arrange to attend it with the assistance of his zonal staff in co-ordination of Mechanical-Electrical and priject staff whenever necessary.
2. He will arrange to solve the water supply and drainge complaints and shall on top most priority take personal visit to solve complaints outstanding for more than 4 days and also all major brakdowns immediatly.
3. He will also arrange the working of road gangs in his wards according to urgency and importance of the respective sites.
4. Deputy City Eng. will visit muster station/stores in his wards ince fortnight and will review th compliance of public complaince and stock of materials required for engineering works.
5. Deputy City Engineer shall assess the quantity and requerement of desilting of drainge lines and strome water drains in his area and will arrange and will verufy that the desilting is done satisfactorily particularly befor mosoon.
6. He will monitor genral establishment in his wards,arrange for departmental truck carting and will regulate the temporary establishment of technical staff and laborers

7. He will help the Add.C.E in procuring the material of Engineering works from Central store.He will make proper assessment well in advance and check the stock in his zonal sub stores.
8. He will have to check the Affidavit for court cases which are prepared by Asst.C.E and will give necessary guidance.
9. He will initiate planning pertaining to augmentation of water pipe line and sewer lines in his area.
10. He will co-ordinate with Torrent., G.E.B., and Ahmedabad Telephones for inter department issues, such as R.O permit fixing of alignment, recover of reinstatement charges etc.
11. The Draftsman and Zonal drawing branches staff will be working under his guidance
12. He will take up the labour problems, establishment schedule and negotiation with labour unions.

(3) ASSISTANT CITY ENGINEER (ZONE):-

- (1) Asst.C.E. will take care of all engineering services and work in their respective wards.They will monitor all the complaints regarding drainage overflow,,M.H,repairs public toilets repairs,water shortage,water line leakages,pollution,New water connection and drainage connection.
- (2) Asst.C.E will attend his maintenance stores at least once a week.He will be available at one of his stores in the morning hours for half an hour i.e from 8.00 to 8.30 A.M. He shall check the muster/Presence of each department stores staff working under him at least once in fortnight.
- (3) He will be helped by his technical supervisors in taking levels,drawing L section,Cross section etc, while executing the resurfacing work of major roads.It will be the full responsibility of Asst.C.E to see that all service lines and cross pipes are laid in time strictly as per specifications.
- (4) Asst.C.E shall take care of all court matters pertaining to his ward.He shall make affidavit in the court after getting it prepared by the Advocate and checked by Dy.C.E concerned.He shall attend the court in routine cases and shall deal with all court Cases.
- (5) He will check the working of staff under his i.e Asst.Engg.,Technical supervisors, Supervisors, Manhole Inspectors, Manhole Sub Inspectors, Line mant etc.
- (6) To take lead,monitor and control the pollution cases.
- (7) To Verify & Check the section of new water connections with by-laws and rules,regulations

- (8) He will verify and monitor the working of chlorination system, foundations and fixing of pumps motors with base plates, bolts-nuts etc.
- (9) He will co-ordinate with laboratory staff in taking samples, testing the quality of water, and will keep records of the same.

(1) ASSISTANT ENGINEER (ZONE):-

An Assistant Engg. has to work under the instruction of Asst.City Engg.He. Will be responsible for day to day complaint and maintenance of the ward.

• **Water**

- A. Attend the distribution W.P.L leakage and main water pipe line leakages. This shall be attended within maximum of two days.
- B. He will check pressure,leakages,illegal or direct motring and will take suitable actions.Thus he has to control and balance water distribution net under the guidance of Asst.C.E.
- C. He will put up proposals for replacement of A.C,R.C.C P.V.C water pipe line,controlling system,cleaning of water pipe lines,wash out and will execute it.
- D. He will be responsible for minor civil maintenance works and overall outlooon and cleanliness of tubewell station in his ward
- E. To keep perfect records,of the pipes,materials and specials supplied to theContractor and those used on site.

- **Road**

- A. He will examine permit for road opening in materials, will recommend if and will reinstate the road after receiving completion report from executing agencies.
- B. He will be responsible for cleaning of catchpits, storm water drains etc. and will do efficient desilting of S.W.D and catchpits in his ward
- C. He will look after minor and immediate repairs maintenance of Central Verge, traffic island etc.

- **Drainage :-**

- A. He will attend the complaints of drainage overflowing, M.H repairs, breakdowns, public toilets repairs and will take suitable immediate action.
- B. He will inspect sites of 90x10 toilets applications, will issue work orders, will verify the work on completion and will recommend the payment.
- C. He will arrange for regular desilting of branch and sub branch drainage lines through departmental labourers.
- D. He will inspect main drainage line of ward with manhole sub-Inspector once a week., and will attend the irregularity, if any. He will also prepare the estimates for desilting of drainage lines, and will get them executed at proper time i.e. well in advance before onset of monsoon.
- E. He will inspect sites of drainage connection and get the connection done after all technical verification and getting the charges deposited in A.M.C.

F. If any irregular drainage connection is found in the ward, it will be the solve responsibility of the Assistant Engineer to stop it, disconnect it and take appropriate action.

• **Building :-**

- A.** An Assistant Engg. in the ward will take care of all the Municipal Building and compound wall or fencing of open plots in his ward. He will arrange for day to day repairs, stop water line as well as tap leakages, replace all leaking pipes and water taps, arrange to give clean water to the consumers (U.G tanks and O.H tanks shall be cleaned regularly).
- B.** Leaking roofs and slabs shall be attended and promptly disposal of rain water shall be smooth and efficient.
- C.** He shall keep the compound, of Municipal building fully secured by maintaining compound wall, gates, wire fencing etc.
- D.** All departmental staff and labourers shall be given adequate works for full utilisation of staff employees and A.E will closely regulate them and supply them with adequate building materials.

vfhK - 3

Âl Kog j wtl e «ÂÇgtbtkyI mhJtl e ftgøæ^r<

* sret sret bnetfytuykduÂl Kog j wtl btuxyI mhJtbtkytJ<e ftgøÎDÂ<

sret sret ftbtuykduÂl Kog btuxyÂM<ðJbtktJh zij edNI I t ybj btk
hnij t ® gbtuykø< sÁhuÂl Kog j wtl btuxmCDe< yt.R/yt.me.R/zume.R
îtht «vtÍ j yze.mexe.Rsl in bthV<u zuBgwfrbSh©e,BgwfrbSh©e <hV
Âl Kog btuxmKvKoÂJd<tu mt&u I tD BgwfrbSh©e <hV bñJtbtkytJuAuyI u
BgwfrbSh©e îtht mCDe< fbexefu sl hj ctzo îtht sÁhe ® Kog XhtJJtbtk
ytJuAuisl tnybj fhJtbtkytJuAu

vfhK - 4 yI u5

ftgtacòJJt I f^{3/4}e fhj DthKtu<&t

ftgtacòJJt btxu t

ÂI gbtuÂJÂI bgtumæI tytu®I gb mldh,æV<htu

Rsl In Ft<tbtk ftgtacòJJt btxu I eau bnscl t ÂJÂI bgtu ,mæI tytuÂI gb
mldh yI ueV<htu uyl mhJtbtkytJuAu

* ce.ve ybume.yfx,
ybetJte bntI dh vtAj ft
ybetJte.

Mkufrbxe<t.23-06-11 I e bexddl tk<tr fœl t fibtd e It

<t.fib I I29

©e bI CîR SJKCîR ChJtzu©e ht fM CîR I Jel ale|vheF I t xft mt& e œhFtMk bife fu-
Bgnl mvj fwtbNI I tkcsx btk15,25,40,60 xft I t FaufI de mtntgxe <&t ntWmed
ctæ t bftl tbtktvKe,dxh,hMkt,vuJdd , j tRxdd rJdhd t fibtufhJt ybd e stœJtR Au
<bs ftWLmej h csx <&t ^thtmÇg©el e dt(x rJdhdtkytJt fibtufhtJJtbtkytJuAu <bt
ftgœnh mtntgxe e ftu udKJe< e ŒgtIgtbtkl ead e Nh<tutFJtI WhtJJtbtkytJj Au

- (1) mtntgxe ftuytu ntWmed mtntgxe<hefuy&Jt I tã xçdd fwtbNI ykde
hSMkh &gj ntwestRyu
- (2) mtntgxe luj uytWx Åj tI mbüt m-tt mtbubsh nwtustRyuykj fBgnl mvj
fwtbNI ,yitz, I dhvtrj ft,ditvlatg< vtmej uytWx Åj tI bsh &gj nwtustRyu
yI ukuj uytWx Åj tI
«btKusukmtntgxe hMkt I ¾/e &gj nwt stRyu
- (3) sœxæ t bvx/Vj æ I tuyhegt < t dtWlz Vj thl tkfthvx yhegt bœc fvtNu
- (4) mtntgxe lkytAtbt ytAt 70 xft mÇgtu tumkKorbŒf< JhtuChvtR &gj nwtu
stRyu
- (5) vtKœ/dxh fl æNI btxæ tksufîR fl æNI atsudhuChJtI tk<t ntg , <ukbtb
mÇgtu e hfb
yæJtlmbtkChJJtI e hnNu
- (6) sumntgxe ymtmeyNI btkfij bBchtæ tkytAtbtkytAt 50 mÇgtustuNezgj ftlk
y&Jt Nezgij xtRçm I tkNu<Je mtntgxe ytmeyNI tã uydeç<t ytvJtbk
ytJNu

Wvh sKtŒgt bœc I e Nh<tuvkœ&<e ntg <ue mtntgxeVj æ/ntWmed ctæ tkbftl tu
rJdhdtkœh J»tu

&<e stœJtR bœc 15%,25%,40%,60% I tkFaœbs btl . ftWLmej h©e <&t btl .
^thtmÇg©el e dt(xbt&e vtKe,dxh,hMkt,vuJdd , j tRxI e mW^tI tkftbfthtJJtI tkhnNu

- vtKed, dxh, M&E j tRx < & t hMktl e mJj < tu (s& t s& t « fhl t cldfb l tu& j d& y h>) cldfb l t& e m& t& g& x& y& t& l u& s& t s& t h& t& l t c& h& t& y& u& y& t& v& J& t y& t& d& l e l e& k
- (1) vtKel e j tRI :-

ÓgÁf< d< JmJtxl t cldfb l w& t& tV&		I e& k
y	50.0 atube & e yti& w& t& g& < tu	vtKel e j tRI l t fJtl t FhFh Fad t 15 % Fao (ÓgÁf< d< Jtufl u v& h& w& t& Fao ytvJtbtk ytJNu)
c	50.0 atube & e JDwyl u65.0 atube mDe	vtKel e j tRI l t fJtl t FhFh Fad t 25 % l t Fao (ÓgÁf< d< Jtufl u l u v& h& w& t& Fao ytvJtbtkytJNu)
f	65.0 atube & e JDwyl u75.0 atube mDe	vtKel e j tRI l t fJtl t FhFh Fad t 50 % l t Fao (ÓgÁf< d< Jtufl u l u v& h& w& t& Fao ytvJtbtkytJN)
F	75.0 atube & e JDwyl & Jt MJ& t& k g& h& l x fusl t Áj t& x& l e m& t& RÍ 400 atuJth y& w& j ufu335 atube & e JDw ntg	vtKel e j tRI l t fJtl t FhFh Fad t 100 % Fao (ÓgÁf< d< Jtufl u v& h& w& t& Fao ytvJtbtkytJN)

(2) dxh : ÓgÁf< d< JmJtxl t cldfb l w& t& tV& :-

ÓgÁf< d< JmJtxl t cldfb l w& t& tV&		I e& k
y	50.0 atube & e yti& w& t& g& < tu	dxh j tRI l t fJtl t FhFh Fad t 15 % l t Fao
c	50.0 atube & e JDwyl u65.0 atube mDe	dxh j tRI l t fJtl t FhFh Fad t 25 % l t Fao
f	65.0 atube & e JDwyl u75.0 atube mDe	dxh j tRI l t fJtl t FhFh Fad t 50 % l t Fao
F	75.0 atube & e JDwyl & Jt MJ& t& k g& h& l x fusl t Áj t& x& l e m& t& RÍ 400 atuJth y& w& j ufu335 atube & e JDw ntg	dxh j tRI l t fJtl t FhFh Fad t 100 5 l t Fao

(3) Mkx j tRx :- ŐgÁf<d< JmJtxl tkctĐfbl wítatVα :-

ŐgÁf< d< JmJtxl t ctĐfbl wítatVα		MJtl yf cfr4/60 Jtx	xgwcj tRx
y	50.0 atube &e ytiAwntg <tu	FhFh Fad t 15 %	FhFh Fad t 25 %
c	50.0 atube &e JDwyl u 65.0 atube mĐe	FhFh Fad t 25 %	FhFh Fad t 50 %
f	65.0 atube &e JDwyl u 75.0 atube mĐe	FhFh Fad t 50 %	FhFh Fad t 75 %
F	75.0 atube &e JDwyl&Jt MJ°tk gñl x fusil t Áj txl e mtRÍ 400 atuJth yxj u fu335 atube &e JDwntg	FhFh Fad t 100 %	FhFh Fad t 100 %

(4) hMkt :- MJ°tk JmJtxl t ctĐfbl wítatVα :-

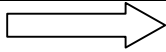
ŐgÁf< d< JmJtxl t ctĐfbl wítatVα		I ék
y	50.0 atube &e ytiAwntg <tu	hM<tufhJtl t FhFh Fad t 15 % I t Fau
c	50.0 atube &e JDwyl u 65.0 atube mĐe	hM<tufhJtl t FhFh Fad t 25 % I t Fau
f	65.0 atube &e JDwyl u 75.0 atube mĐe	hM<tufhJtl t FhFh Fad t 50 % I t Fau
F	75.0 atube &e JDwyl&Jt MJ°tk gñl x fusil t Áj txl e mtRÍ 400 atuJth yxj u fu335 atube &e JDwntg	hM<tufhJtl t FhFh Fad t 100 % I t Fau

I tĐ :-

- (2) Wvht&< hMkt btxil e mJj < Bgk hM<tl e vnt&tR 10' ntg <&t yl u<yf s mtntgxe y&Jt yntnegNI I t cufu<&e JDwbftl til uy&ta vnt vtz<tuntg yl usuv&j ef x&ÁVf btxuF&j tuhtFJtbkytJ<tuntg <Űe mtntgxe ytuy&Jt yNtnegNI til us j tC b&Nu
- (3) hM<tl e 12 ' &e JDthtl e vnt&tR Jtuxu f&M&fuJtuz&, fia&vex ÁJ. I tu vhw&ntu Fau mtntgxe/yNtnegNI vtm&e Jmj j ŰtbkytJNu

mtblg Nh<tu-

- (1) Wvht< Ál <ebtk Mj Bm-atj eytl tu mbtJN &<tu l &e.<bl u btxu ntj l e l eÁ< ybj btk hnNu
- (2) dwnt. ctzd e &t yLg btwe ntWmedl gtsl tytu fusbtkgw extu 120 fuJDwntg <we gtsl tytl uyt htn<l tuj tC bæNul ne.
- (3) vtKe,dxh,Mxþj tRx,hM<tl e mJj <tu 'Jnj t <u vnj t' l t DthKusu hS.mtmtgxe ytu yNtmegNI l til uÁcÓzed gñ vhbeNI bæe nNu(yxj ufusl tkctDftbl t BgwftwtnNI yu blsh fhj Áj tl <btKil tknNj) <we l uytvJtbtkytJNu
- (4) hSllxz mtmtgxe yNtmegNI til u<t 01-04-80 vnj t cÓzed gñ vhbeNI bæe nNu<we mtmtgxe ytu yNtmegNI l til u •&t su mtmt. yuy sÁhe zevtú exl e hfb BgwftwtnNI btk sbt fhtJj Au <u mtmtgxe ytl u htn<tl t æhu hM< fhe ytvJtl e mJj < ytvJtbtk ytJNusumtmtgxe ytu yNtmegNI btkfj bBchtú t ytAtbtkytAt 50 % mÇgtustuNezgj ftllx y&Jt Nezgj xRçm nNu<we mtmtgxe/yNtNegNI l til uydþb<t ytvJtbtkytJNu yl uytJumtmt/yNtmegNI til u<t 01-04-80 bæ<l wcdl hnNul ne.
- (5) ftR vK ntWmedl fb m ftbNegj ftBvj útbtkt(ntWmedl Mxj blxbt) fusbtkmxj blxl t fj ctDftbl t útftVæ vife 5 % &e JDwúftVæ æftl tyftbNegj vhwÍ •&t cel JmJtxl t n&nytubtxuJtvhtJtbtkytJj ntg <we gtsl tytl uyt htn<l t l eÁ<l tuj tC bæe NfNu l ne.vhkumkv/KoFaj R ftb fhe ytvJtbtkytJNu



mDthtu

BgwftwtnNI XhtJ Ik699

<t. 26-12-86

BgwftwtnNI X.I k 709 <t 20-11-84 &e mtmtgxe., Vj km, dwn t. ctzd t bftl tuznj t, Fzfeytu •&t atj eytbtkhM<t, vtKe, zlj is j tRI tu •&t Mxpx j tRxtil e htn<l t æhu mdJz ytvJt ykdu &gj XhtJbt (1) ctDftbl t ynegtl t cæj u ctDftbl t Åj el& ynegt •&t(2) smet smet Åj el& ynegt ntg <wt xil t blix, Vj km, xtRv mtmtgxe, btkmhhtN ctDftbl tuÅj el& ynegt dKJtl tuVhVth fhe <ubisc ynegt dKe su<ufutt bisc l tuVtætu j R hM<t, vtKe, zlj is •&t mÅJm j tRI l e mdJztuytvJtl e hnnu

BgwftwtnNI XhtJ Ik 463

<t.-29-09-89

ntWmeld ctzd e Jmtn<tu &t S.ytR.ze.me Jmtn<tbtBgwftwtnh©eytl t vtætl t csæbt&e htz <&t yLg mJj <l t fbtufhJtl e l eÅ< htFJtl e <&t yt l eÅ< bisc fbtunt& DhJtl e bisme ytvJtbkylJuAu

BgwftwtnNI XhtJ Ik 429

<t.-23-09-88

ybetJte BgwftwtnNI l e nebtkytJij Ft l de mtmtgxe yufuslKu vtætl t Fao s <ble mtmtgxe l t ytkhef hM<t vft fhj ntg <we mtmtgxebk BgwftwtnNI îht vtKe, zlj is ÅJdhu mÅJm j tRI l tF<t <tæj htz heRLMæx fhJt su<u vtæo vtmu htz Ft<tyu l -e fhj heRLMæx blix l e atur-m hfb Jmij j R htz heRLMæx fhJtl e bisme ytvJtbkylJuAu

mDthtu

vtKe, dxh, Mxpx j tRx <&t hM<tl e mJj <tusmet smet «fth l t ctDftbJtæe mtmtgxe ytl usmet smet htn<l t æhtyuytvJt ykdu e l eÅ< BgwftwtnNI X.I k709 <t 20-11-84 &e l ¾fe &gj Au<btkl eausKtJij VhVthtufhij Au

VhVth l e ÅJd<

ylw	«J<bt l stæJtR	VhVth bisc
(4)	hM<t	
2	hM<tl e 12' &e JDthtl e vntætr JtuxufcQ Mxtlj Jtuzlj fævex ÅJ. l tu vlnvntu Fao mtmtgxe/yntnegNI vtm&e Jmij j wtbkylJNu	hM<tl e vntætr bt'ot 12' l e s hnnuyt Wvhtk JtuxufcQ Vævt& væed, Mxpb Jtæh zRI <bs fævex l e mJj <tu yt gts l t bisc ytvJtbkylJNu

	mtblg Nh<tu-	
(3)	vtKe,dxh,Mxëx j tRx,hM<tI e mJj <tu "Jnj t <u vnj t" I t DthKu su hSMxz mtantgxytyyuntmeyNI til u ÂcÔzedl gñ vhbeNI bæe nN(yxj u fu sil t ctDftb Bgwftwtl ublsh fhj t Âj tl «btKil t nN) <wle e ytvJtbktyJNu	vtKe,dxh,MxëtuJtuZp Mxëx j tRx,vU&h vuled hM<t <bs hM<t hemhVRmedl e mJj <tu "Jnj t <u vnj t" I t DthKu su mtantgxytyVj xm <bs ymtul t j u ytWx Âj tl ftwtoîtht blsh fhtJj nNu<we mtant.,Vj xm <bs ymtul u ytvJtbktyJNu
ylw	«J<btI stlJtR	VhVth bœc
(4)	su hSMxz mtantgxe/yuntmegNI til u <t 1-04-80 vnj t ©cÔzedl gñ vhbeNI bæe nNu <we s mtantgxytyyuntmegNI til u htn<I t ehu hM<t fhe ytvJtbk ytJNu su mtantgxytyyuntmegNI btk fij bBchl t ytAtbtk ytAt 50 xft mÇgtu stu Nezgij ftMx y&Jt Nezgij xËRcl t nNu <we mtantgxytyyuntmegNI til u ydëb<t («tgthexe) ytvJtbk ytJNu yl u ytJe mtantgxytyyuntmegNI til u <t 01-04- 80 I e bæ<I wcdI hndul ne.	su hSMxz mtantgxe,Vj xm <bs ymtul tuj u ytWx Âj tl ftwtoNI îtht blsh fhtJj t nNu<&t su mtantgxytyyVj xm <bs yuntmegNI toyu sÂhe zevtîl exl e hfb BgwftwtNI btk sbt fhtJj Au<bl u htn<I t ehu hM<t fhe ytvJtl e mJj < ytvJtbk ytJNu su mtantgxytyVj xm <bs ymtul t btk fij bBchl t ytAtbtk ytAt 50 xft mÇgtu stu Nezgij ftMx y&Jt Nezgij xËRcl t nNu <we mtantgxytyVj xm <bs ymtul til u yAdëb<t («tgthexe) ytvJtbk ytJNu
<p>• Mkzeld fœxe XhtJ I k-433 <t :-22-07-99</p> <p>XhtJ fgta fu vtKe,dxh,Mxëx j tRx <&t hM<tI e mJj <tu sœt sœt «fthl t ctDftbJtæe mtantgxytil u sœt sœt htn<I t ehty ytvJt yldil e I eÂ< Bgwftwto X. I k 709 <t 20-11-84 &e I ¾/e &gj Au</p>		

ybetJtæ Bgñl Ámvj ftwñNI
vqloÍ tñ - RSI ñ Ft<w

BgwftwñNI ãtht vtKel t fl fñI <bs zñ ñl t fl fñI sñet sñet æh&e hnñtKI t
 <&t cel hnñtKI t bftl tubtxu ytvJtbtK ytJuAu yt æhtuDKt mbg vñj t l -e fhJtbtK
 ytJij Au yt mbg æhBgtl bñæhegôm, bsñe, Jesæe(yñl SoatSm) ÁJdñl t æhtuJD<t dgt
 Au<bs Nññl e ngt< vtKel e <&t zñ ñl e j tRI tñ tubhtb< - ÁI CtJI tuFaovK JD<tuòg
 Au ytJt Fad uvntlæ JæJt l eausKtògt bñsc l t mDthj t æh bññ fhJtI wXhtJJtbtK yfògw
 Au

mñla< vtKel t fl fñI æhtu(áttSm)

ÁJd<	Mkizæd flæxeyumaJj æhtu
(1) fl fñI uatSm	
(y) Bgñl .vtKel e j tRI btñstñtK fhJtI tuatso	
(1) 1/2" Jtñh fl fñI (bexh)	Yt 300/-
(2) 1/2" Jtñh fl fñI (mtbtLg)	Yt 100/-
(3) 3/4 " Jtñh fl fñI (bexh&e)	Yt1000/-
(4) 3/4" Jtñh fl fñI (mtbtLg)	Yt 600/-
(5) 1" Jtñh fl fñI (bexh&e)	Yt2000/-
(6) 1" Jtñh fl fñI (mtbtLg)	Yt 1200/-
(6) 3" l e cñLa vtRv j tRI (bexh&e)	Yt2000/-
(7) 3" l e cñLa vtRv j tRI (mtbtLg)	Yt1200/-
(8) 4" l e cñLa vtRv j tRI (mtbtLg)	Yt 2000/-
(c) fl fñI fhJt btñt t &l th ftbl tuFaovJ æh JfoatSm	
ftatbtñtñj vtzJt <&t FtztufhJt	Yt300/-
vtRv j tRI æh 2 Vñku(hl ecd)	Yt 50/-
yñMñtòx htæ <tæel untij vtzJt <&t FtztufhJt	Yt1000/-
vtRv j tRI æh 2 Vñku(hl ecd)	Yt 100/-
(2) bexh fl fñI tubexh xút	
zevtñl x 1/2" fl fñI	Yt500/-
zevtñl x 3/4 " fl fñI	Yt1000/-
zevtñl x 1" fl fñI	Yt2000/-
(2) bexhl t JvñtNI t æh(1000 j exhl t)	
hnñtKI t bexhl t atSm	Yt3.00
ftbNegj l t bexhl t atSm	Yt 8.00
yññfLzeñI ftbNegj atSm	Yt 20.00

mála & zóðir flíflí ehtu(áttSm)		
ylw l	bftl l tukfth	Málzæð fbærymæJj æh
1	mtblg hnktK (yf glæx)	Yt 400/-
2	j thtRÍ Vj k,mtmtgæ,ftbvj út cæðzæð(hnktK btxu	Yt250/-
3	ftbNægj cæðzæð	
	(1) 1 & 100 atube (cæðxyv ylnegt)	Yt 750/-
	(2) 100 & 150 atube (cæðxyv ylnegt)	Yt 1200/-
	(3) 150 & 200 atube (cæðxyv ylnegt)	Yt 1500/-
	(4) 200 & 250 atube (cæðxyv ylnegt)	Yt 2000/-
	(4) 250 atube ctæ æh 100 atbe JDtht btxu	Yt 500/-
4	gK btm& JDtbtæ l wcnbtæ bftl	
	(1) 100 atube mDel t bftl tubtxu	Yt 15000/-
	(2) 100 atube & Wvhl t bftl tubtxu	Yt 35000/-
5	ntxj cæðzæð	
	(1) mtblg ntxj ,hMxthLx xtRv	Yt 4000/-
	(2) ntxj cæðzæð(xwMxth mDe)	Yt 10000/-
	(3) ntxj cæðzæð (& Mxth mDe)	Yt 20000/-
	(4) ntxj cæðzæð (Vth Mxth mDe)	Yt 30000/-
	(5) ntxj cæðzæð (VtRj Mxth mDe) (RLxhl NI j ylnvtæo &Jt&e)	Yt 40000

vfhK - 6

mldXI Âl gRtK nX α l t ÔgÂf<ytuvtml t

ceM<tJstul t Jdtd wv^otf

JtzwJtEÍ vtKe, z η is, rcÔz'dl t cs κ / btj mbtl hSM λ h
htFJtbkylJuAu

vfhK - 7

I eÂ< Dz<h y&Jt I eÂ<I t ybj mçDbtksI <tI t

mÇgtumt&uvhtbNo

ehif yXJtâzgwJtzotRÍ ftWLmej h©eytuòzurbx'd htFJtbtkytJu

Au<&t bÂnI uyif Jth mbd{Í tI t ftWLmej h©eytustzu bexed htFJtbtkytJu

Au yI u<bl e VÂngtæti tuBgwftwtoI e I eÂ<-ÂI gbl e bgtætbtkhnel uÂI ftj

fhJtbtkytJuAu

vfhK - 8

ÔgJM&t<PtI t Ctd <hefuy&Jt mj tnI t n&wbtxucu

fu<&e JDwÔgÂf<I t cI j t ctzofumÂbr<I e I tk^

- * htz ylz ÂcÔzed frbx
ybœtJte bntI dh vtÂj ft,
ybœtJte.
- * Jtxh mÂj tg ylz myyhs fÂbxe
ybœtJte bntI dh vtÂj ft
ybœtJte.
- * Mxlized f@bxe
ybœtJte bntI dh vtÂj ft
ybœtJte.
- * BgÂl Âmvj ctzo
ybœtJte bntI dh vtÂj ft
ybœtJte.

vfhK - 9 yI u10

yÂDfthe yI ufbætheytu e btÂn<e vÂM<ft yI u

<bl uÂJÂI gbtbtktstâJtR fgto«btKubα<wJα<h

વર્ણવેલ તુલના યાદી/ ફાઇલ નામ

ક્ર.સં.	વર્ણવેલ તુલના	રજીસ્ટ્રેશન	યુ.એ.સી. યાદી/ ફાઇલ નામ	વર્ણવેલ તુલના	ફાઇલ નામ	ફોન નંબર	ઈમેલ યાદી
1	વર્ણવેલ તુલના	ESI ન	યુ.એ.સી. યાદી/ ફાઇલ નામ	યુ.એ.સી. યાદી/ ફાઇલ નામ	©e «KgCtE Ntn	9374503932	addceez@ahmedabadcity.gov.in
2	વર્ણવેલ તુલના	ESI ન	મિલિતર બંધન યુ.એ.સી. યાદી/ ફાઇલ નામ	સુ મેક્ષ યુ.એ.સી. (1)	©e બી ટેક્ટીકલ મિલિતર	9374503932	
3	વર્ણવેલ તુલના	ESI ન	મિલિતર બંધન યુ.એ.સી. યાદી/ ફાઇલ નામ	સુ મેક્ષ યુ.એ.સી. (h)	©e «KgCtE Ntn	9374503932	pranayshah@ahmedabadcity.gov.in
4	વર્ણવેલ તુલના	ESI ન	મિલિતર બંધન યુ.એ.સી. યાદી/ ફાઇલ નામ	સુ મેક્ષ યુ.એ.સી. (3)	©e હબીટી «ઢવર<	9327554911	rtprajapati@ahmedabadcity.gov.in
1	«ત્રિસંખ્યકોષ	ESI ન	ઢંભ બંધન યુ.એ.સી. યાદી/ ફાઇલ નામ	યુ.એ.સી. યાદી/ ફાઇલ નામ	©e નિજી યુ.એ.સી. જે.સી.	9328198721	svbhatt@ahmedabadcity.gov.in
2	દત્તકોષ	ESI ન	ઢંભ બંધન યુ.એ.સી. યાદી/ ફાઇલ નામ	યુ.એ.સી. યાદી/ ફાઇલ નામ	©e રવિષ્ટીકલ ફાઇલ «ઢવર<	9327513455	acegomtipur@gmail.com
3	યુ.એ.સી. યાદી/ ફાઇલ નામ	ESI ન	ઢંભ બંધન યુ.એ.સી. યાદી/ ફાઇલ નામ	યુ.એ.સી. યાદી/ ફાઇલ નામ	©e મિલિતર વીજી	9327513540	aceamraiwadi@gmail.com
4	સી.એ.સી.	ESI ન	ઢંભ બંધન યુ.એ.સી. યાદી/ ફાઇલ નામ	યુ.એ.સી. યાદી/ ફાઇલ નામ	©e સી.એ.સી. યુ.એ.સી.	9327513458	acebhaipura@gmail.com
5	રિપોર્ટ	ESI ન	ઢંભ બંધન યુ.એ.સી. યાદી/ ફાઇલ નામ	ઇલેક્ટ્રોનિક યુ.એ.સી. યાદી/ ફાઇલ નામ	©e રીજીસ્ટ્રેશન વીજી	9377667636	acenikol34@gmail.com
6	યુ.એ.સી. યાદી/ ફાઇલ નામ	ESI ન	ઢંભ બંધન યુ.એ.સી. યાદી/ ફાઇલ નામ	યુ.એ.સી. યાદી/ ફાઇલ નામ	©e નેહીલ વીજી	9327513465	aceodhav@gmail.com
7	યુ.એ.સી. યાદી/ ફાઇલ નામ	ESI ન	ઢંભ બંધન યુ.એ.સી. યાદી/ ફાઇલ નામ	યુ.એ.સી. યાદી/ ફાઇલ નામ	©e «રેવિટી વીજી	9327584123	acevastral@gmail.com
8	રિપોર્ટ	ESI ન	ઢંભ બંધન યુ.એ.સી. યાદી/ ફાઇલ નામ	યુ.એ.સી. યાદી/ ફાઇલ નામ	©e યુ.એ.સી. વીજી	9327513454	aceviratnagar@gmail.com
9	યુ.એ.સી. યાદી/ ફાઇલ નામ	ESI ન	ઢંભ બંધન યુ.એ.સી. યાદી/ ફાઇલ નામ	યુ.એ.સી. યાદી/ ફાઇલ નામ	©e રેલ વીજી	9327513543	aceramolhathijan@gmail.com
10	યુ.એ.સી. યાદી/ ફાઇલ નામ	ESI ન	ઢંભ બંધન યુ.એ.સી. યાદી/ ફાઇલ નામ	યુ.એ.સી. યાદી/ ફાઇલ નામ	©e બી ટેક્ટીકલ વીજી	9723902541	aceramolhathijan@gmail.com

vqof tñ It yr^fthe/ fbøtheytñ uJñl gbtñtkstñJtR fgt«btKub«w«h

y.lk	ntñtu	dñ
1	yze. mexe yñSI egh	118500-214100 (137500)
2	zu mexe yñSI egh	67700-208700
4	ytme. mexe yñSI egh	53100-167800(65200)
5	ytme. yñSI egh	44900-142400 (50500)
6	xfl efj MvñJtEÍ h	29200-92300 (31000)

«fhK -11

**<btb gts l tytu Mra<, Faoy l ufhj Jna Kevhl t yndtj t e rJd<tu
>Ntd<e<le>hf yslmel w/tαJj ykts v°t**

mknæmÇg©e, ^thtmÇg©e yl u ftWLmej h©eytl tk ftbtul e rJd<tu
Åj tl 'd Ft<t îtht JcmtEx Wvh BËfJtbtkytJuAu ftWLmej h©eytl e rbx'dbtk
<bl t ftbtul kv°tf ytvJtbtkytJuAu
vqloÍ til btkVtαJj huLgwyftWLx J»to19-20 l e rJd< l eaubisc Au

ybaetJtæ Bgnl rmvj ftwthdl

vqó tã Rsl h

VtαJj csx J»to2019-20 huLgwyftWLx

rzvtxblx/yftWLx ftæ	Ft<k&t yftWLx næ l hl tb	2018-19l tuBgw ftwtul ubsh fhj ykts
211	yllkx y l umex RBvð blx zevtxblx	
38205	Mfj	22.00
38207	ftBgw exe ntôm <&t ytzextnegb	10.00
38210	MxtV ¾Jtxmi	10.00
38212	nrhsl ¾Jtxmo	1.00
38213	Mj b ¾j eghLm ¾Jtxmo	3.00
38232	Bgnl .bftl tæceftl tu	32.00
38298	Bgnl .rbj f<tu<&t Åj tætl uJtgh Vlumed <&t fBvt. Jtj fhJt	20.00
211	<u>yllkx y l umex RBvð blx zevtxblx l hfj</u>	98.00
301	ckct Ft<u(Vtgh rcðz)	
38225	Vtgh rcðz MxNI	2.00
38229	Vtgh rcðz ¾Jtxmo	2.00
301	<u>ckct Ft<u(Vtgh rcðz) l hfj</u>	4.00

313	vtKe le JnlKe	
38602	Jtæh vtRv ÔttRI	300.00
38603	Jtæh vkved MxNI	10.00
38604	vtKe le xtlfeytu(Jtæh xlf)	15.00
38626	vrçj f xw	3.00
313	vtKe le JnlKe I kfj	328.00
325	cfla myrÍ vkved MxNI	
38202	Jfmo	2.00
325	cfla myrÍ vkved MxNI I kfj	2.00
326	zþis ÔttRI	
38502	zþis vtRvÔttRI	320.00
48308	zeNeðxeld atsam	375.00
326	zþis ÔttRI I kfj	695.00
331	vcj ef òsY <&t vNtcFtl t	
38314	Ntatj g	85.00
38350	yæxl e fj b-188 bñsc òsY hevln fhJt	3.00
38353	vNtcFtl t	10.00
38328	ytw/hNI ylz blxl Lm	60.00
331	vcj ef òsY <&t vNtcFtl t I kfj	158.00
334	MxflboJtæh zþI	
38506	MxflboJtæh zþI	110.00
334	MxflboJtæh zþI I kfj	110.00
371	Rsl h zevtxblx - mtbtlg æFhf	
34899	yLg Fato	11.00
371	Rsl h zevtxblx - mtbtlg æFhf I kfj	11.00
381	hMkt, dj eytu Vmvt&	
38401	hMkt dj eytu<&t Vævt&	275.00
38407	Vævt& (vulblx)	30.00
38413	vtæ vulblx	2.00
381	hMkt, dj eytu Vmvt& I kfj	305.00

401	nÓ&Ft<h	
38222	bMxh MxNI	9.00
401	<u>nÓ&Ft<t I hfj</u>	<u>9.00</u>
441	slb-bhK I tK Kezvtxblx	
38312	MbNtl dh	4.00
441	<u>slb-bhK I tK Kezvtxblx I hfj</u>	<u>4.00</u>
501	æJtFtl t	
38206	ntMvexj <&t bxlhl exe ntlb	2.00
501	<u>æJtFtl t I hfj</u>	<u>2.00</u>
601	vtf<&t cdeat	
38224	MxtmoytuVm I t bftl tu	3.00
601	<u>vtf<&t cdeat I hfj</u>	<u>3.00</u>
603	hb<-db< I t bætl	
38305	hb<-db< I t bætl	3.00
603	<u>hb<-db< I t bætl I hfj</u>	<u>3.00</u>
606	Vvtht	
38311	Vvtht	3.00
606	<u>Vvtht I hfj</u>	<u>3.00</u>
611	MJebeld vfm	
38306	MI tl tdth (MJebeld vij)	3.00
611	<u>MJebeld vfm I hfj</u>	<u>3.00</u>
707	vM<ftj g	
38309	j tgcne	3.00
707	<u>vM<ftj g I hfj</u>	<u>3.00</u>
371	<u>EsI h zvtxblx sl hj MpvhrJÍ I</u>	
38328	hevhn d ylz blxu vuylyz GpÍ xtEj x	25.00
371	<u>EsI h zvtxblx sl hj MpvhrJÍ I I hfj</u>	<u>20.00</u>
352	<u>fahtl turl ftj</u>	
38297	faht vxe, fahtl turl ftj	3.00
48203	fahtl turl ftj	50.00

48205	zMxcel Mvtæ	80.00
48206	fil tj mVtE	250.00
48209	ht ^o tuyI ur>Jmuxfxh CtzuhtFJt, fahtI tu rl ftj	35.00
<u>352</u>	<u>fahtI tlrI ftj Lpkfj</u>	<u>418.00</u>
<u>332</u>	<u>LQmLm xlfh</u>	
48024	Ntfvex	65.00
<u>332</u>	<u>LQmLm xlfhLpkfj</u>	<u>65.00</u>

vfhK - 12 ylu13

yt&f mntg ctc<, ytvij AAtxtu vhJtl deytu

y&Jt yADfj<y tubæJI thtl e ÂJd<

90 / 10l tkôsYl e yhSytuytme. mexe yluSl egh j ulj ublsh fhJtbtkytJuAu

v{hK - 14

Rj fxtl ef MJYvubtÂn<e

* RSI h - vφoÍ tl l e btÂn<e <http://ahmedabadcity.gov.in> Wvh

Wvj çD AuWvht&< mtRx Wvh l Jt xLzhtl e btÂn<e vK ztWI j tã fhe Nftg

<we ôgôM&t Wvj çD Au

vfhK - 15

d&tj g , Jtlal tj g

* j tdwz<wl &e.

vfhK - 16

yvej yr^fthe yÂDfthel t l tb, nt&Eumhl tbt

yl uVtu l ch

yl u l	l tb	nt&Ej	Vtu l k(ytWem)	bt&Ej l ch	hebtfn
1	©e «KgCtE Ntn	yr.e.mexe. Rsl h	079-222970422 (y&Am.225)	9374503932	
2	ÄEJ t l t <btb Jt&E t ytm.e.mexe ylSrl gh ònh btrn<e yr^fthe<hefurl btgj Au sl t l tb <&t bt&Ej l ch yt mt&umbj Au (llvh Bpsc)				

v{hK - 17

btÂn<e bæJJt btxul tdÂhftul uWvj çD mJj <tu e

ÂJd<tu

Rsl h - vφo Í tu îtht j tftul u btÂn<e bæu <u btxuÂJctd îtht yvl tJj

vÎDÂ<ytyul umJj <tu

* bntI dh vtÂj ftI e JcmtRx

<http://ahmedabadcity.gov.in>

* I tkem ctzo

* J<btI v^ot îtht (sÂhegt< bmscl t «mbd)