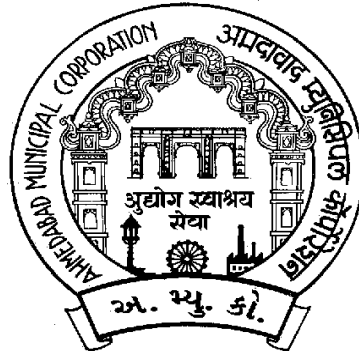


htRx xurLVtbŃl yfx - 2005 ykd& Rsl h vŃoŃ tŃ l k&tyfxeJ zem³/₄ tŃ h

btŃn<e(b& Jtl t)yŃDfth
yŃDŃl gb - 2005

yŃDŃl gbl fj b - 4 (F) n& I e ŃJd<Jth
btŃn<e ytv<e vŃM<ft/btd&ŃNŃft

ŃJctdl wl tb - Rsl h - vŃoŃ tŃ



yb&tJt& bntl dhvtŃj ft
Rsl h-vŃoŃ tŃ

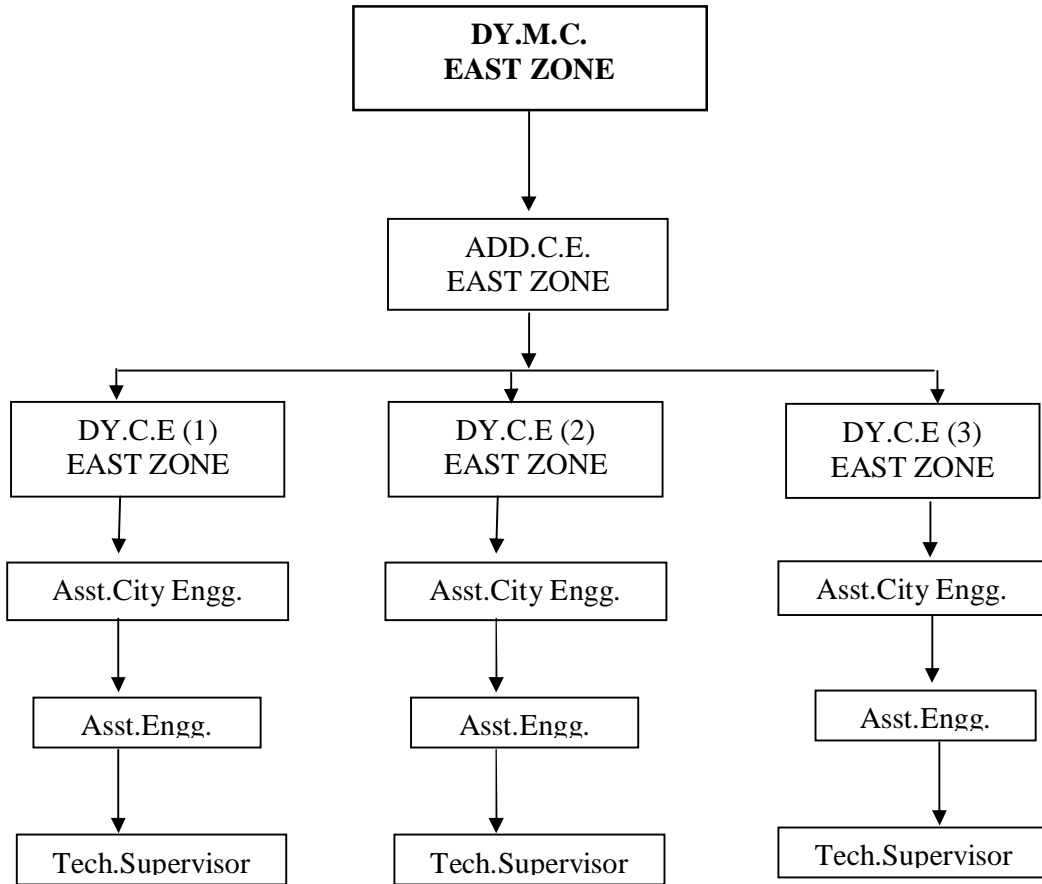
Jt&2017-18

vfhK - 1

mbdXI I e ÂJd<tu
ÔgJM&t<Rt, ftgtayI uVhstu

ÔgJM&t<RtbtzkuBÇprl .frbNI h, yze.mexe yLlSl egh, zumexe yLlSl egh,
ytme.mexe yLlSl egh, ytme.yLlSl egh,xifl efj mwhJtRÍ h <&t I til
xifl efj mwhJtRÍ I tu mbtJN &tg Au zÏ ß, vtKe, htz <&t BÇprl .rcÔz´d
cl tJt yldil e ftbdehe <bs blxl Lml e ftbdehe fhJtbtKyJuAu <bs
zÏ ß yl uvtKel t fl ifNI tuytvJtbtKyJuAu

**AHMEDABAD MUNICIPAL CORPORATION
EAST ZONE - ENGINEERING DEPARTMENT**



«fhK - 2

yADfthe <&t fbøthel e ytl em•ttytuy l w/hstu

(1) ADDITIONAL CITY ENGINEER (ZONE)

1. He shall plan Overall improvement and development of water S.W.D,Roads and Drainge service of his zones,and shall keep in touch and co-ordination with Project Devision as well as Electrical-Mechanical Section for timely implementation.He will also balance the proper water distrubution in his zonal areas and make suitable changes in network and valve controles,whereever and whenever necessary.
2. He shall cheke the complaint registers atleast once on a fortnight,ensure that the complaint are atteded regularly and promptly.
3. He will guide his staff for structural improvement of Muncipla building,public toilets,Sanitary Blocks etc.He will monitor his staff in well planned maintence and desilting of Strom water drains,Catchpits.Drainge lines,Manholes before and during Monsoon.He will also control and restrict the sewage water from entering the strome water drain in fair seasons.
4. He will schedule the rgular visit at source of water supply to his area.He will also pay regular visit to sewage disposal woris under him and will monitor the quality of effluent as well as the function of S.T.P.

5. Add.c.e will be responsible for planning of Budget for works under hom and at the same time he will have to keep up the progress of the works to meet with the Budget provision. Add.C.E's will monitor the preparation of tender documents ,specification of each of the items,their rates and the time shedule (time limit) for complition of work.

6. Add.C.E will keet an up to date record for the works carried outh from
(1) Govt. or any other grant(2) Govt.or any other loan(3) Works undr M.P Budget (4) Works under M.L.A Budgetr (5) Works under Muncipal Councilors budget with him.

(2) DEPUTY CITY ENGINEER(ZONE)

1. Deputy City Engineer will see overall maintenance of Engineering services in his wards. He will keep the close watch on the zonal and tubewell station and drainage pumping station of his wards, as well as terminal sewage pumping stations and if any problem is found, he shall immediately arrange to attend it with the assistance of his zonal staff in co-ordination of Mechanical-Electrical and project staff whenever necessary.
2. He will arrange to solve the water supply and drainage complaints and shall on top most priority take personal visit to solve complaints outstanding for more than 4 days and also all major breakdowns immediately.
3. He will also arrange the working of road gangs in his wards according to urgency and importance of the respective sites.
4. Deputy City Eng. will visit muster station/stores in his wards once fortnight and will review the compliance of public compliance and stock of materials required for engineering works.
5. Deputy City Engineer shall assess the quantity and requirement of desilting of drainage lines and storm water drains in his area and will arrange and will verify that the desilting is done satisfactorily particularly before monsoon.
6. He will monitor general establishment in his wards, arrange for departmental truck carting and will regulate the temporary establishment of technical staff and laborers

7. He will help the Add.C.E in procuring the material of Engineering works from Central store.He will make proper assessment well in advance and check the stock in his zonal sub stores.
8. He will have to check the Affidavit for court cases which are prepared by Asst.C.E and will give necessary guidance.
9. He will initiate planning pertaining to augmentation of water pipe line and sewer lines in his area.
10. He will co-ordinate with Torrent., G.E.B., and Ahmedabad Telephones for inter department issues, such as R.O permit fixing of alignment, recover of reinstatement charges etc.
11. The Draftsman and Zonal drawing branches staff will be working under his guidance
12. He will take up the labour problems, establishment schedule and negotiation with labour unions.

(3) ASSISTANT CITY ENGINEER (ZONE):-

- (1) Asst.C.E. will take care of all engineering services and work in their respective wards.They will monitor all the complaints regarding drainage overflow,,M.H,repairs public toilets repairs,water shortage,water line leakages,pollution,New water connection and drainage connection.
- (2) Asst.C.E will attend his maintenance stores at least once a week.He will be available at one of his stores in the morning hours for half an hour i.e from 8.00 to 8.30 A.M. He shall check the muster/Presence of each department stores staff working under him at least once in fortnight.
- (3) He will be helped by his technical supervisors in taking levels,drawing L section,Cross section etc, while executing the resurfacing work of major roads.It will be the full responsibility of Asst.C.E to see that all service lines and cross pipes are laid in time strictly as per specifications.
- (4) Asst.C.E shall take care of all court matters pertaining to his ward.He shall make affidavit in the court after getting it prepared by the Advocate and checked by Dy.C.E concerned.He shall attend the court in routine cases and shall deal with all court Cases.
- (5) He will check the working of staff under his i.e Asst.Engg.,Technical supervisors, Supervisors, Manhole Inspectors, Manhole Sub Inspectors, Line mant etc.
- (6) To take lead,monitor and control the pollution cases.
- (7) To Verify & Check the section of new water connections with by-laws and rules,regulations

- (8) He will verify and monitor the working of chlorination system, foundations and fixing of pumps motors with base plates, bolts-nuts etc.
- (9) He will co-ordinate with laboratory staff in taking samples, testing the quality of water, and will keep records of the same.

(1) ASSISTANT ENGINEER (ZONE):-

An Assistant Engg. has to work under the instruction of Asst.City Engg.He. Will be responsible for day to day complaint and maintenance of the ward.

• **Water**

- A. Attend the distribution W.P.L leakage and main water pipe line leakages. This shall be attended within maximum of two days.
- B. He will check pressure,leakages,illegal or direct motring and will take suitable actions.Thus he has to control and balance water distribution net under the guidance of Asst.C.E.
- C. He will put up proposals for replacement of A.C,R.C.C P.V.C water pipe line,controlling system,cleaning of water pipe lines,wash out and will execute it.
- D. He will be responsible for minor civil maintenance works and overall outlooon and cleanliness of tubewell station in his ward
- E. To keep perfect records,of the pipes,materials and specials supplied to theContractor and those used on site.

- **Road**

- A. He will examine permit for road opening in materials, will recommend if and will reinstate the road after receiving completion report from executing agencies.
- B. He will be responsible for cleaning of catchpits, storm water drains etc. and will do efficient desilting of S.W.D and catchpits in his ward
- C. He will look after minor and immediate repairs maintenance of Central Verge, traffic island etc.

- **Drainage :-**

- A. He will attend the complaints of drainage overflowing, M.H repairs, breakdowns, public toilets repairs and will take suitable immediate action.
- B. He will inspect sites of 90x10 toilets applications, will issue work orders, will verify the work on completion and will recommend the payment.
- C. He will arrange for regular desilting of branch and sub branch drainage lines through departmental labourers.
- D. He will inspect main drainage line of ward with manhole sub-Inspector once a week., and will attend the irregularity, if any. He will also prepare the estimates for desilting of drainage lines, and will get them executed at proper time i.e well in advance before onset of monsoon.
- E. He will inspect sites of drainage connection and get the connection done after all technical verification and getting the charges deposited in A.M.C.

F. If any irregular drainage connection is found in the ward, it will be the sole responsibility of the Assistant Engineer to stop it, disconnect it and take appropriate action.

• **Building :-**

- A.** An Assistant Engg. in the ward will take care of all the Municipal Building and compound wall or fencing of open plots in his ward. He will arrange for day to day repairs, stop water line as well as tap leakages, replace all leaking pipes and water taps, arrange to give clean water to the consumers (U.G tanks and O.H tanks shall be cleaned regularly).
- B.** Leaking roofs and slabs shall be attended and prompt disposal of rain water shall be smooth and efficient.
- C.** He shall keep the compound of Municipal building fully secured by maintaining compound wall, gates, wire fencing etc.
- D.** All departmental staff and labourers shall be given adequate work for full utilisation of staff employees and A.E will closely regulate them and supply them with adequate building materials.

v{fhK - 3

Âl Kog j wtl e «ÂÇgtbtkyI mhJtl e
ftgøæ^r<

* sret sret bretfytyylduÂl Kog j wtl btxyI mhJtbtkytJ<e ftgøîDÂ<

sret sret fbtuylduÂl Kog btxyÂM<ðJbtkvtJh zij edNI I t ybj btk
hnij t ® gbtuykø< sÁhuÂl Kog j wtl btxu mlcDe< yt.R/yt.me.R/zume.R
îtht «vtí j yze.mexe.Rsl in bthV<u zuBgwfrbSh©e,BgwfrbSh©e <hV
Âl Kog btxu mlvKoÂJd<tu mt&u I tD BgwfrbSh©e <hV bñJtbtkytJuAuyI u
BgwfrbSh©e îtht mlcDe< fbexe fu sl hj ctzo îtht sÁhe ® Kog XhtJJtbt
ytJuAusi turybj fhJtbtkytJuAu

vfhK - 4 yI u5

ftgtacòJJt I f^{3/4}e fhj DthKtu<&t

ftgtacòJJt btxl t

ÂI gbtuÂJÂI bgtumæI tytu®I gb mldh,æV<htu

Rsl ln Ft<tbtk ftgtacòJJt btxl eau bnscl t ÂJÂI bgtu ,mæI tytuÂI gb
mldh yI ueV<htl uyl mhJtbtkytJuAu

* ce.ve ybume.yfx,
ybetJtæ bntI dh vtÂj ft
ybetJtæ.

- vtKe,dxh,Mkpx j tRx <&t hll<tl e mJj <tu(swt swt «fhl t cldfb l tuAj d& yhegt) cldfbJtæm lntgxeytl uswt swt htn< l t chtyuytvJt yldl e l d&

(1) vtKel e j tRI :-

0gAf< d< JmJtxl t cldfb l wltVα		I d&
y	50.0 atube &e ytiAwntg <tu	vtKel e j tRI l tFJtl t FhFh Fad t 15 % Fao(0gAf<d< Jtufl u vhw/nt Fao ytvJtbtkytJNu)
c	50.0 atube &e JDwyl u65.0 atube mDe	vtKel e j tRI l tFJtl t FhFh Fad t 25 % l t Fao(0gAf<d< Jtufl ul u vhw/nt Fao ytvJtbtkytJNu)
f	65.0 atube &e JDwyl u75.0 atube mDe	vtKel e j tRI l tFJtl t FhFh Fad t 50 % l t Fao(0gAf<d< Jtufl u vhw/nt Fao ytvJtbtkytJN)
F	75.0 atube &e JDwyl&Jt MJ'ok ghl x fusl t Aj t&l e mtRl 400 atuJth y&j ufu335 atube &e JDwntg	vtKel e j tRI l tFJtl t FhFh Fad t 100 % Fao (0gAf<d< Jtufl u vhw/nt Fao ytvJtbtkytJN)

(2) dxh : 0gAf<d< JmJtxl t cldfb l wltVα :-

0gAf< d< JmJtxl t cldfb l wltVα		I d&
y	50.0 atube &e ytiAwntg <tu	dxh j tRI l tFJtl t FhFh Fad t 15 % l t Fao
c	50.0 atube &e JDwyl u65.0 atube mDe	dxhj tRI l tFJtl t FhFh Fad t 25 % l t Fao
f	65.0 atube &e JDwyl u75.0 atube mDe	dxhj tRI l tFJtl t FhFh Fad t 50 % l t Fao
F	75.0 atube &e JDwyl&Jt MJ'ok ghl x fusl t Aj t&l e mtRl 400 atuJth y&j ufu335 atube &e JDwntg	dxh j tRI l tFJtl t FhFh Fad t 100 5 l t Fao

(3) Mkx j tRx :- ÓgÁf<d< JmJtxl tkctDfbl wítatVα :-

ÓgÁf< d< JmJtxl t ctDfbl wítatVα		MJtl yf cfr4/60 Jtx	xgwcj tRx
y	50.0 atube &e ytiAwntg <tu	FhFh Fad t 15 %	FhFh Fad t 25 %
c	50.0 atube &e JDwyl u 65.0 atube mDe	FhFh Fad t 25 %	FhFh Fad t 50 %
f	65.0 atube &e JDwyl u 75.0 atube mDe	FhFh Fad t 50 %	FhFh Fad t 75 %
F	75.0 atube &e JDwyl&Jt MJ°tk gñl x fusil t Áj txl e mtRÍ 400 atuJth yxj u fu335 atube &e JDwntg	FhFh Fad t 100 %	FhFh Fad t 100 %

(4) hMkt :- MJ°tk JmJtxl t ctDfbl wítatVα :-

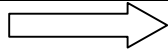
ÓgÁf< d< JmJtxl t ctDfbl wítatVα		I ék
y	50.0 atube &e ytiAwntg <tu	hM<tufhJtl t FhFh Fad t 15 % I t Fau
c	50.0 atube &e JDwyl u 65.0 atube mDe	hM<tufhJtl t FhFh Fad t 25 % I t Fau
f	65.0 atube &e JDwyl u 75.0 atube mDe	hM<tufhJtl t FhFh Fad t 50 % I t Fau
F	75.0 atube &e JDwyl&Jt MJ°tk gñl x fusil t Áj txl e mtRÍ 400 atuJth yxj u fu335 atube &e JDwntg	hM<tufhJtl t FhFh Fad t 100 % I t Fau

I tD :-

- (2) Wvht& hMkt btul e mJj < Bgk hM<tl e vntæR 10' ntg <&t yl u<uyf s mtntgxe y&Jt ymtnegNI I t cufu<&e JDwbftl til uy&ta vnt vtz<tuntg yl usuv&j ef x&ÁVf btXuF&j tuhtFJtbkylJ<tuntg <w mtntgxe ytuy&Jt yNtnegNI til us j tC bαNu
- (3) hM<tl e 12 ' &e JDthtl e vntæR Jtuxu fcoMx&uJtuz&, f&avex ÁJ. I tu vhw&ntu Fau mtntgxe/yNtnegNI vtm&e Jmj j wtbkylJNu

mtblg Nh<tu-

- (1) Wvht< Ál <ebtk Mj Bm-atj eytl tu mbtJN &<tu l &e.<bl u btxu ntj l e l eÁ< ybj btk hnNu
- (2) dwnt. ctzd e &t yLg btwe ntWmedl gtsl tytu fuslbtkgw extu 120 fuJDwntg <we gtsl tytl uyt htn<l tuj tC bæNul ne.
- (3) vtKe,dxh,Mx&exj tRx,hM<tl e mJj <tu 'Jnij t <u vnij t' l t DthKusu hS.mtmtgxe ytu yNtmegNI l til uÁcÓzedl gñ vhbeNI bæe nNu(yxj ufusl tkctDftbl t BgwftwtnNI yu blsln fhj Áj tl <btKil tknNi) <we l uytvJtbtkytJNu
- (4) hSllox mtmtgxe yNtmegNI til u<t 01-04-80 vnij t cÓzedl gñ vhbeNI bæe nNu<we mtmtgxe ytu yNtmegNI l til u •&t su mtmt. ynyu sÁhe zevtíl exl e hfb BgwftwtnNI btk sbt fhtJj Au <u mtmtgxe ytl u htn<tl t æhu hM<t fhe ytvJtl e mJj < ytvJtbtk ytJNusumtmtgxe ytu yNtmegNI btkfij bBchtíl t ytAtbtkytAt 50 % mÇgtustuNezgj fllx y&Jt Nezgij xRçm nNu<we mtmtgxe/yNtNegNI l til uyd< ytvJtbtkytJNu yl uytJumtnt/yNtmegNI til u<t 01-04-80 bæ<l wcdl hnNul ne.
- (5) ftR vK ntWmedl fb m ftbNegj ftBvj útbt(ntWmedl Mxj blxbt) fuslbtkmxj blxl t fij ctDftbl t útftVæ vífe 5 % &e JDwútftVæ æftl tu ftbNegj vhwÍ •&t cel JmJtxl t n&nytubtxuJtvhtJtbtkytJj ntg <we gtsl tytl uyt htn<l t l eÁ<l tuj tC bæe NfNu l ne.vhkumkvKofaaj R ftb fhe ytvJtbtkytJNu



mDthtu

BgwftwtnNI XhtJ Ik699

<t. 26-12-86

BgwftwtnNI X.I k 709 <t 20-11-84 &e mtmtgxe., Vj km, dwn t. ctzd t bftl tuznj t, Fzfeytu•&t atj eytbtkhM<t, vtKe, zll is j tRI tu•&t Mxpx j tRxtil e htn<l t æhu mdJz ytvJt ykdu &gj XhtJbt(1) ctDftbl t ynegtl t cæj u ctDftbl t Åj el& ynegt •&t(2) sret sret Åj el& ynegt ntg <wt xil t blix, Vj km, xtRv mtmtgxe, btkmhhtN ctDftbl tuÅj el& ynegt dKJtl tuVhVth fhe <ubisc ynegt dKe su<ufutt bisc l tuVtætu j R hM<t, vtKe, zll is •&t mÅJm j tRI l e mdJztuytvJtl e hnnNu

BgwftwtnNI XhtJ Ik 463

<t:-29-09-89

ntWmeld ctzd e Jmtn<tu<&t S.ytR.ze.me Jmtn<tbtK Bgwftwtnh©eytl t vtætl t csæbt&e htz <&t yLg mJj <l t fbtufhJtl e l eÅ< htFJtl e <&t yt l eÅ< bisc fbtunt& DhJtl e blice ytvJtbktyJuAu

BgwftwtnNI XhtJ Ik 429

<t:-23-09-88

ybetJte BgwftwtnNI l e nebtkytJij Ftl de mtmtgxe yufuslKu vtætl t Fao s <ble mtmtgxe l t ytkhef hM<t vtft fhj ntg <we mtmtgxebtk BgwftwtnNI îtht vtKe, zll is ÅJdhu mÅJm j tRI l tF<t <tæj htz heRLMæx fhJt su<u vtæo vtmu htz Ft<tyu l -e fhj heRLMæx blix l e atur-m hfb Jmij j R htz heRLMæx fhJtl e blice ytvJtbktyJuAu

mDthtu

vtKe, dxh, Mxpx j tRx <&t hM<tl e mJj <tusret sret «fthl t ctDftbJtæe mtmtgxe ytl usret sret htn<l t æhtyuytvJt ykdu e l eÅ< BgwftwtnNI X.I k709 <t 20-11-84 &e l ¾fe &gj Au<btkl eausKtJij VhVthtufhij Au

VhVth l e ÅJd<

ylwl	«J<btI stæJtR	VhVth bisc
(4)	hM<t	
2	hM<tl e 12' &e JDthtl e vntætr JtuxufcQ Mxtlj Jtuzlj fævex ÅJ. l tu vhu/vntu Fao mtmtgxe/yntænegnNI vtm&e Jmij j wtbktyJNu	hM<tl e vntætr bt'ot 12' l e s hnnNu yt Wvhtk JtuxufcQ Vævt& væed, Mxpb Jtæh zRI <bs fævex l e mJj <tu yt gts l t bisc ytvJtbk tyJNu

	mtblg Nh<tu-	
(3)	vtKe,dxh,Mxëx j tRx,hM<tI e mJj <tu "Jnj t <u vnj t" I t DthKu su hSMxz mtantgxytyyuntmeyNI til u ÂcÔzedl gñ vhbeNI bæe nN(yxj u fu sil t ctDftb Bgfwtvtil ublsh fhj t Âj tl «btKil t nN) <wle e ytvJtbktyJNu	vtKe,dxh,MxëtuJtuZp Mxëx j tRx,vU&h vuled hM<t <bs hM<t hemhVRmedl e mJj <tu "Jnj t <u vnj t" I t DthKu su mtantgxytyVj xkm <bs ymtul t j u ytWx Âj tl ftwtoîtht blsh fhtJj nNu<we mtant.,Vj xkm <bs ymtul u ytvJtbktyJNu
ylw	«J<btI stâJtR	VhVth bsc
(4)	su hSMxz mtantgxe/yuntmegNI til u <t 1-04-80 vnj t ©cÔzedl gñ vhbeNI bæe nNu <we s mtantgxytyyuntmegNI til u htn<I t ehu hM<t fhe ytvJtbk tyJNu su mtantgxytyyuntmegNI btk fij bBchl t ytAtbkytAt 50 xft mÇgtu stu Nezgij ftMx y&Jt Nezgij xfRcl t nNu <we mtantgxytyyuntmegNI til u ydëb<t («tgthexe) ytvJtbk tyJNu yl u ytJe mtantgxytyyuntmegNI til u <t 01-04- 80 I e bæe<I wcdI hndul ne.	su hSMxz mtantgxe,Vj xkm <bs ymtul tuj u ytWx Âj tl ftwtnNI îtht blsh fhtJj t nNu<&t su mtantgxytyyVj xkm <bs yuntmegNI toyu sÂhe zevtîl exl e hfb BgfwtvtnNI btk sbt fhtJj Au<bl u htn<I t ehuhM<t fhe ytvJtl e mJj < ytvJtbk tyJNu su mtantgxytyVj xkm <bs ymtul t btk fij bBchl t ytAtbky ytAt 50 xft mÇgtu stu Nezgij ftMx y&Jt Nezgij xfRcl t nNu <we mtantgxytyVj xkm <bs ymtul til u yAdëb<t («tgthexe)ytvJtbk tyJNu
<p align="center">• Mkzdd f®xeXhtJ I k-433 <t :-22-07-99</p> <p>XhtJ fgta fu vtKe,dxh,Mxëx j tRx <&t hM<tI e mJj <tu sret sret «fthl t ctDftbJtæe mtantgxytil u sret sret htn<I t ehtyuytvJt yldil e I eÂ< BgfwtvtoX. I k 709 <t 20-11-84 &e I ¾&e &gj Aymeh XhtJI e mtblg Nh<til e 'ytRxb I k2 dwnt.ctzd e <&t yLg btæe ntWmedl gtsI tytu fusbtkgñ extu120 fu<æe JDwntg <we gtsI tytil uyt htn<I tuj tC bæNul ne' hæ fhJt hsw&gj ehfMk yldufÂbxebtkaato &gt; bsc meh yt.I k2 btæe " <&t yLg btæe ntWmedl" yxj t Nçetu hæ fhJtl e BgfwtvtnNI I e blshel e yvütt yublshe ytvJtbktyJuAu</p>		

YbæJtæ Bgñl Ámvj ftwñNI

vqloÍ tú - RSI ñ Ft<w

BgwftwñNI îtht vtKel t fl fñI <bs zñ ñl t fl fñI sñet sñet æh&e hnñtKI t
 <&t cel hnñtKI t bftl tubtxu ytvJtbtK ytJuAu yt æhtuDKt mbg vnj t l -e fhJtbtK
 ytJij Au yt mbg æhBgtl bæhegóm, bsñe, Jesæe(yñl SoatSm) ÁJdñl t æhtuJD<t dgt
 Au<bs Nññl e ngt< vtKel e <&t zñ ñl e j tRI tú tubhtb< - ÁI CtJI tuFaovK JD<tuòg
 Au ytJt Fad uvntlæ JæJt l eausKtògt bñsc l t mDthj t æh bññ fhJtI wXhtJJtbtKytoGw
 Au

mñla< vtKel t fl fñI æhtu(áttSm)

ÁJd<	Mkizæd flæxeyumaJj æhtu
(1) fl fñI uatSm	
(y) Bgñl .vtKel e j tRI btñstñK fhJtI tuatso	
(1) 1/2" Jtñh fl fñI (bexh)	Yt 300/-
(2) 1/2" Jtñh fl fñI (mtbtLg)	Yt 100/-
(3) 3/4 " Jtñh fl fñI (bexh&e)	Yt1000/-
(4) 3/4" Jtñh fl fñI (mtbtLg)	Yt 600/-
(5) 1" Jtñh fl fñI (bexh&e)	Yt2000/-
(6) 1" Jtñh fl fñI (mtbtLg)	Yt 1200/-
(6) 3" l e cñLa vtRv j tRI (bexh&e)	Yt2000/-
(7) 3" l e cñLa vtRv j tRI (mtbtLg)	Yt1200/-
(8) 4" l e cñLa vtRv j tRI (mtbtLg)	Yt 2000/-
(c) fl fñI fhJt btñt t &l th ftbl tuFaovK ch JfoatSm	
ftatbtñntj vtzJt <&t FtztufhJt	Yt300/-
vtRv j tRI æh 2 Vñu(hl ecd)	Yt 50/-
yñMñtòx htæ <tæel untij vtzJt <&t FtztufhJt	Yt1000/-
vtRv j tRI æh 2 Vñu(hl ecd)	Yt 100/-
(2) bexh fl fñI tubexh xút	
zevtú x 1/2" fl fñI	Yt500/-
zevtú x 3/4 " fl fñI	Yt1000/-
zevtú x 1" fl fñI	Yt2000/-
(2) bexhl t JvñtNI t æh(1000 j exhl t)	
hnñtKI t bexhl t atSm	Yt3.00
ftbNegj l t bexhl t atSm	Yt 8.00
yñflzeñl ftbNegj atSm	Yt 20.00

mála < zlíðis flíðni ættu(áttSm)		
ylw l	bftl l tukfth	Mklzæd fbæreyumaJj æh
1	mtblg hnktK (yf glæx)	Yt 400/-
2	j thtRÍ Vj k,mtmtgæ,ftbvj út cæðæd(hnktK btxu	Yt250/-
3	ftbNægj cæðæd	
	(1) 1 & 100 atube (cæðxyv ylnegt)	Yt 750/-
	(2) 100 & 150 atube (cæðxyv ylnegt)	Yt 1200/-
	(3) 150 & 200 atube (cæðxyv ylnegt)	Yt 1500/-
	(4) 200 & 250 atube (cæðxyv ylnegt)	Yt 2000/-
	(4) 250 atube ctæ æh 100 atbe JDtht btxu	Yt 500/-
4	gK btm&JDtbtæ l wcnbtæ bftl	
	(1) 100 atube mDel t bftl tubtxu	Yt 15000/-
	(2) 100 atube &æ Wvhl t bftl tubtxu	Yt 35000/-
5	ntxj cæðæd	
	(1) mtblg ntxj ,hMxthLx xtRv	Yt 4000/-
	(2) ntxj cæðæd(xwMxth mDe)	Yt 10000/-
	(3) ntxj cæðæd (&æ Mxth mDe)	Yt 20000/-
	(4) ntxj cæðæd (Vth Mxth mDe)	Yt 30000/-
	(5) ntxj cæðæd (VtRj Mxth mDe) (RLxhl NI j ylnvtæo &Jt&æ)	Yt 40000

vfhK - 6

mldXI Âl gRtK nX^αl t ÔgÂf<ytuvtml t

ceM<tJstl t Jdtd w^otf

JtzwJtEÍ vtKe, z^l is, rcÔz'dl t cs^x / btj mbtl hSMxh
htFJtbkylJuAu

vfhK - 7

I eÂ< Dz<h y&Jt I eÂ<I t ybj mKDbtksI <tI t

mÇgtumt&uvhtbNo

ehif yXJtâzguJtzotRÍ ftWLmej h©eytuòzurbx´d htFJtbtkytJu
Au<&t bÂnI uyif Jth mbd{Í tI I t ftWLmej h©eytustzu bexeld htFJtbtkytJu
Au yI u<bl e VÂngtætil tuBgwftwtoI e I eÂ<-ÂI gbl e bgtætbtkhnel uÂI ftj
fhJtbtkytJuAu

vfhK - 8

ÔgJM&t<PtI t Ctd <hefuy&Jt mj tnI t n&wbtxucu

fu<&e JDwÔgÂf<I t cI j t ctzofumÂbr<I e I tk^

- * htz ylz ÂcÔzeld frbx
ybœtJte bntI dh vtÂj ft,
ybœtJte.
- * Jtxh mÂj tg ylz myhs fÂbxe
ybœtJte bntI dh vtÂj ft
ybœtJte.
- * Mxlzeld fÂbxe
ybœtJte bntI dh vtÂj ft
ybœtJte.
- * BgÂl Âmvj ctzo
ybœtJte bntI dh vtÂj ft
ybœtJte.

vfhK - 9 yI u10

yÂDfthe yI ufbætheytu e btÂn<e vÂM<ft yI u
<bl uÂJÂI gbtbtktstJtR fgto«btKubα<uJα<h

vɔɔl tɔ I t yr^fthe/ fbætheytɔ erJd<

y.Ik	Jtzo	rJCtd	yth.xe.ytE. ykdæ ntiɛtu	ntiɛtu	fbæthel ɪ tb	btɛtRj I kh
1	vɔɔl tɔ	ESl ɪn	yvej yr^fthe	yze.mexe yɪS.	©e Vt0øɔl CtE rblMte	9328385540
2	vɔɔl tɔ	ESl ɪn	mɪfj I btrn<e yr^fthe	zu mexe yɪS.(1)	©e rJsgCtR ztCe	9327038815
3	vɔɔl tɔ	ESl ɪn	mɪfj I btrn<e yr^fthe	zu mexe yɪS.(h)	©e dtwtj CtR vxj	9374514374
4	vɔɔl tɔ	ESl ɪn	mɪfj I btrn<e yr^fthe	zu mexe yɪS (3)	©e hbNCtR «òvr<	9327554911
1	«tsfx bl ɛblx gɪl x	ESl ɪn	ònh btrn<e yr^fthe	ytme. mexe yɪS.	©e rl hsCtR vɪntɔn<	9327513492
2	dtb<eɪph	ESl ɪn	ònh btrn<e yr^fthe	ytme. mexe yɪS.	©e røj evCtR chkt	9712967283
3	ybhtEJtze	ESl ɪn	ònh btrn<e yr^fthe	ytme. mexe yɪS.	©e ml ej CtR vxj	9327513540
4	CtEÄpht	ESl ɪn	ònh btrn<e yr^fthe	ytme. mexe yɪS.	©e «Vj CtR ChJtz	9327584124
5	rl ftj	ESl ɪn	ònh btrn<e yr^fthe	ytme. mexe yɪS.	©e rvɔɔtɔfɪbth fu «òvr<	9327513455
6	ytɪZJ	ESl ɪn	ònh btrn<e yr^fthe	ytme. mexe yɪS.	©e hts I CtE vxj	9327513448
7	JM^ttj	ESl ɪn	ònh btrn<e yr^fthe	ytme. mexe yɪS.	©e «revCtR vtXf	9327584123
8	rJhtxl dh	ESl ɪn	ònh btrn<e yr^fthe	ytme. mexe yɪS.	©e ybj CtR fj f•ttJtj t	9327513454
9	htbtj /nt&esK - 1	ESl ɪn	ònh btrn<e yr^fthe	ytme. mexe yɪS.	©e rel NCtR vxj	9327513543
10	htbtj /nt&esK - 2	ESl ɪn	ònh btrn<e yr^fthe	ytme. mexe yɪS.	©e bnNCtR vxj	9723902541

vqof tñ It yr^fthe/ fbøtheytñ uJñl gbtbtktstñJtR fgtø«btKub«<w«<h

y.lk	ntñtu	dñ
1	yñze. mexe yñlSI egh	118500-214100 (137500)
2	zu mexe yñlSI egh	67700-208700
4	ytme. mexe yñlSI egh	53100-167800(65200)
5	ytme. yñlSI egh	44900-142400 (50500)
6	xfñl efj MpvñJtEñ h	29200-92300 (31000)

«fhK -11

<btb gtsl tytu Mra<, Faoyl ufhy JnaKevhl t yndtj tilerJd<tu
>Ntd<e<le>hf yslmel w/tαJj ykts v°t

mknæmÇg©e, ^thtmÇg©e yl u ftWLmej h©eytul tk ftbtul e rJd<tu
Åj tl 'd Ft<t îtht JcmtEx Wvh BëfJtbtkytJuAu ftWLmej h©eytul e rbx'dbtk
<bl t ftbtulpkv°tf ytvJtbtkytJuAu
vqloÍ til btkVtαJj huLgnyftWLx J»to15-16l e rJd< l eaubisc Au

ybaetJtae Bgnl rmvj ftwthNI

vqó tã Rsl h

VtαJj csx J»to2015-16 huLgnyftWLx

rzvtxblx/yftWLx ftα	Ft<k&t yftWLx nα l hl tb	2017-18l tuBgu ftwtul u blsh fhj ykts (Yt. j tFbt)
211	ytkx yl umexe RBvð blx zevtxblx	
38205	Mfj	30.00
38207	ftBgnl exe ntóm <&t ytzexthegb	4.50
38210	MxtV ¾Jtxmo	8.00
38212	nrhsl ¾Jtxmo	1.00
38213	Mj b ¾j eghLm ¾Jtxmo	15.00
38232	Bgnl .bftl tuæftl tu	20.00
38298	Bgnl .rbj f<tu<&t Åj tãtil wJtgh Vlmedl <&t fBvt. Jtj fhJt	100.00
211	ytkx yl umexe RBvð blx zevtxblx l kfj	178.50
301	clct Ft<v(Vtgh rcðz)	
38225	Vtgh rcðz MxNI	3.00
38229	Vtgh rcðz ¾Jtxmo	3.00
301	clct Ft<v(Vtgh rcðz) l kfj	6.00

313	vtKe l eJnlKe	
38602	Jttxh vtRv ÖttRI	225.00
38603	Jttxh vkved MxNI	5.00
38604	vtKe l e xtfeytu(Jttxh xlf)	5.00
38626	vrcj f xw	3.00
<u>313</u>	<u>vtKe l eJnlKe l hfj</u>	<u>238.00</u>
325	cfla myrÍ vkved MxNI	
38202	Jfmo	3.00
<u>325</u>	<u>cfla myrÍ vkved MxNI l hfj</u>	<u>3.00</u>
326	zfls ÖttRI	
38502	zfls vtRvÖttRI	300.00
48308	zeNeÖxedl atsem	450.00
<u>326</u>	<u>zfls ÖttRI l hfj</u>	<u>750.00</u>
331	vcj ef òsY <&t vNtcFtl t	
38314	Ntatj g	25.00
38350	yxl e fj b-188 bsc òsY hevln fhJt	5.00
38353	vNtcFtl t	5.00
<u>331</u>	<u>vcj ef òsY <&t vNtcFtl t l hfj</u>	<u>35.00</u>
334	MxflboJttxh zfl	
38506	MxflboJttxh zfl	80.00
<u>334</u>	<u>MxflboJttxh zfl l hfj</u>	<u>80.00</u>
371	Rsl h zevtxblx - mtbtlg æFhf	
34899	ylg Fato	10.00
<u>371</u>	<u>Rsl h zevtxblx - mtbtlg æFhf l hfj</u>	<u>10.00</u>
381	hMkt, dj eytu Vxvt&	
38401	hMkt dj eytu<&t Vxvt&	250.00
38407	Vxvt& (vwblix)	20.00
38413	vtæ vwblix	3.00
<u>381</u>	<u>hMkt, dj eytu Vxvt& l hfj</u>	<u>273.00</u>
401	nÖ&Ft<h	
38222	bMxh MxNI	15.00

401	<u>nÓ&Ft<t I kfj</u>	<u>15.00</u>
441	<u>slb-bhK I tñ Ke zevtxblx</u>	
38312	MbNtl dh	4.00
441	<u>slb-bhK I tñ Ke zevtxblx I kfj</u>	<u>4.00</u>
501	<u>æJtFtl t</u>	
38206	ntñvexj <&t bñhl exe ntñ	4.00
501	<u>æJtFtl t I kfj</u>	<u>4.00</u>
601	<u>vtfo<&t cdeat</u>	
38224	MxtmoytaVm I t bftl tu	6.00
601	<u>vtfo<&t cdeat I kfj</u>	<u>6.00</u>
603	<u>hb<-db< I t bætl</u>	
38305	hb<-db< I t bætl	3.00
603	<u>hb<-db< I t bætl I kfj</u>	<u>3.00</u>
606	<u>Vũtht</u>	
38311	<u>Vũtht</u>	<u>8.00</u>
606	<u>Vũtht I kfj</u>	<u>8.00</u>
611	<u>MJebd vñm</u>	
38306	Ml tl tdth (MJebd vñj)	5.00
611	<u>MJebd vñm I kfj</u>	<u>5.00</u>
707	<u>vñkftj g</u>	
38309	j tgcñe	5.00
707	<u>vñkftj g I kfj</u>	<u>5.00</u>
371	<u>Es I h zevtxblx sl hj MvhrJÍ I</u>	
34303	btñh Ònefj ylz xñLmvtñkoEfJevblx	<u>20.00</u>
38251	E.zcÓçp. ym. ntWm' d blxñ Lm	20.00
38328	hevñ' d ylz blxu vuylyz çpÍ xtñEj ñ	80.00
371	<u>Es I h zevtxblx sl hj MvhrJÍ I I kfj</u>	<u>100.00</u>

v{fhK - 12 yI u13

yt&f mntg ctc<, ytvij AAtxtu vhJtl deytu

y&Jt yADfj<y tubæJI thtl e ÂJd<

90 / 10I tkôsYI e yhSytuytme.mexe yIuSI egh j ulj ublsh fhJtbtkytJuAu

v{hK - 14

Rj fxttl ef MJYvubtÂn<e

* RSI h - vφoÍ tll e btÂn<e <http://ahmedabadcity.gov.in> Wvh

Wvj çD AuWvht&< mtRx Wvh I Jt xlzhtll e btÂn<e vK ztWI j tiz fhe Nftg

<we ôgôM&t Wvj çD Au

vfhK - 15

d&tj g , Jtal tj g

* j tdwz<wl &e.

vfhK - 16

yvej yr^fthe yÂDfthel t l tb, nt&Etumhl tbt

yl uVtl l ch

yl l	l tb	nt&É	Vtl l k(ytWem)	bt&ÉRj l ch	hebtfn
1	©e Vt&Épl CtE rbMPte	yr.e.mexe. Rsl h	079-222970422 (y&Am.225)	9328385540	
2	ÄÉJ t l t <btb Jt&É t ytm.e.mexe ylSrl gh ònh btrn<e yr^fthe<hefurl btgj Au sl t l tb <&t bt&ÉEj l ch yt mt&umt&Éj Au (llvh Bpsc)				

v{fhK - 17

btÂn<e bæJJt btxul tdÂhftul uWvj çD mJj <tu e

ÂJd<tu

Rsl h - vφo Í tu îtht j tftul u btÂn<e bæu <u btxuÂJCtd îtht yvl tJj

vÎDÂ<yтуyl umJj <tu

* bntl dh vtâj ftl e JcmtRx

<http://ahmedabadcity.gov.in>

* I tkem ctzo

* J<btl v°t îtht (sÂhegt< bmscl t «mbd)